



MONTHLY MEMBERSHIP PROGRESS REPORT

District 322C5

Results as of: 05/31/2019

GMT: SWADESH RANJAN SAHA

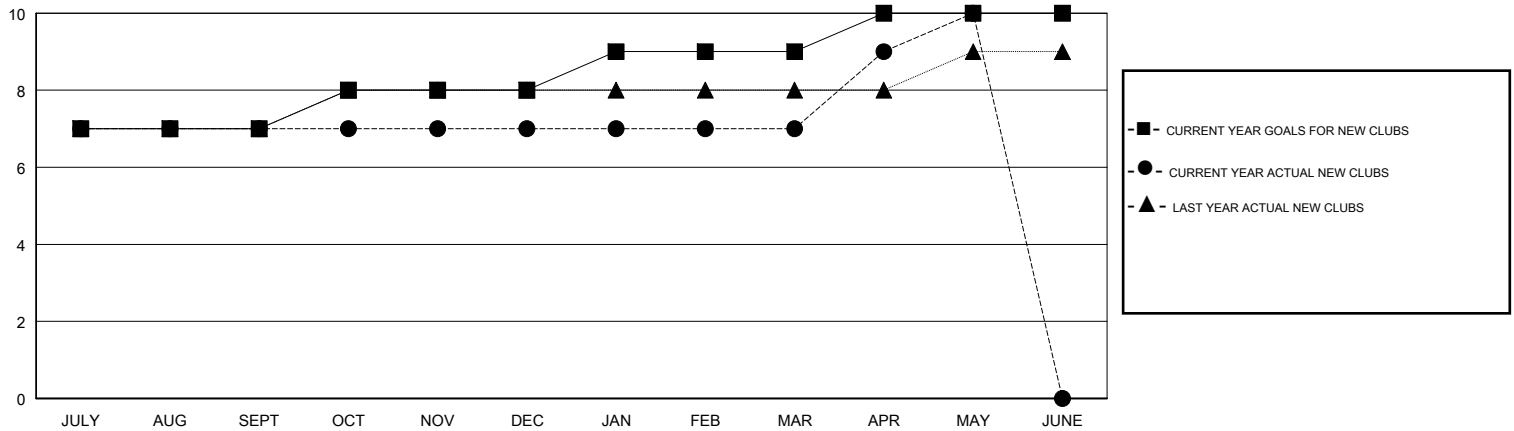
LOCATION INDIA

GMT CA

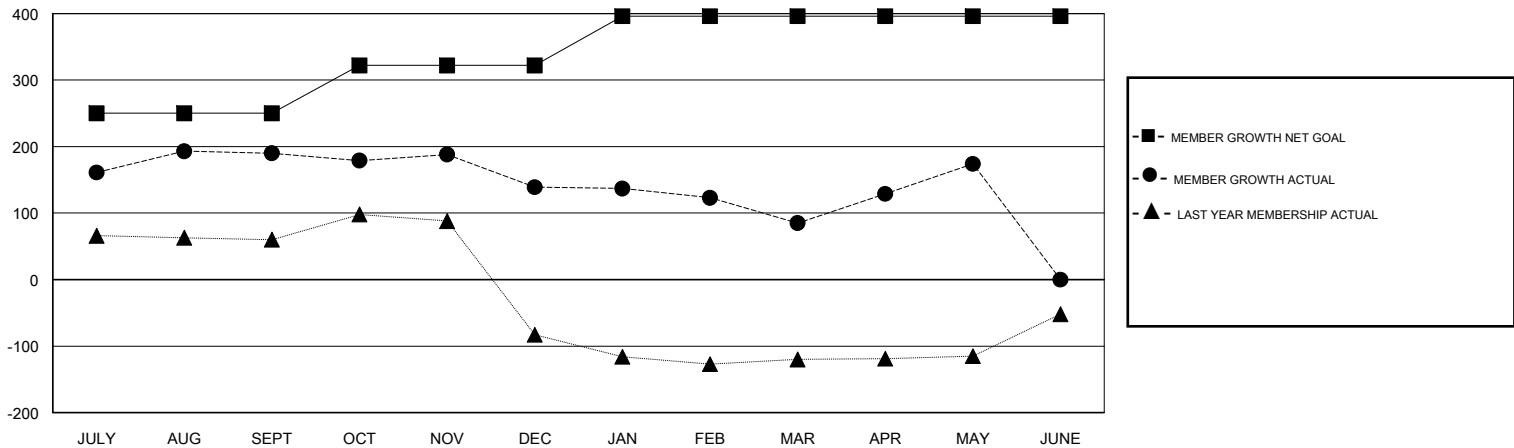
Clubs			
RESULTS FOR 2018-2019			
QUARTER	NEW CLUB GOAL	NEW CLUBS	DROPPED CLUBS
JULY/AUG/SEPT	7	7	0
OCT/NOV/DEC	1	0	3
JAN/FEB/MAR	1	0	2
APR/MAY/JUNE	1	3	0

Members			
RESULTS FOR 2018-2019			
QUARTER	MEMBER GROWTH NET GOAL	MEMBER GROWTH ACTUAL	DROPPED MEMBERS ACTUAL (including transfers)
JULY/AUG/SEPT	250	214	22
OCT/NOV/DEC	72	69	116
JAN/FEB/MAR	74	13	67
APR/MAY/JUNE	0	124	25

GOALS AND ACTUAL NEW CLUBS CUMULATIVE



GOALS AND ACTUAL MEMBERS CUMULATIVE



DROPPED CLUBS: 5	38 CLUBS OF 68 ADDED 1 OR MORE NEW MEMBERS	<u>GENDER DISTRIBUTION</u> MALE 1,215 (61.74%) FEMALE 753 (38.26%) Women Percentage Fiscal Year Goal: 40%
<u>DROPPED MEMBERS</u> DECEASED 0 CLUB CANCELLED 96 OTHER 134 TOTAL 230	CLICK HERE FOR CUMULATIVE MEMBERSHIP DATA	TOTAL FAMILY UNIT MEMBERS 904 FAMILY MEMBERS PAYING HALF DUES 481